



YOUTH EMPLOYMENT

ADDRESSING THE CHALLENGES OF YOUTH NEET

16 – 20 SEPTEMBER 2019
TURIN, ITALY

ADDRESSING THE CHALLENGES OF YOUTH NEET

INSTRUMENTS AND RESPONSES FOR LABOUR MARKET INCLUSION

OVERVIEW

SNAPSHOT OF THE COURSE

In 2018, more than one in five young people were neither in employment nor in education or training (NEET). Between 2005 and 2018, the global youth NEET rate decreased by a mere 2 percentage points, raising concerns in relation to the achievement of the SDG 8.6 target. This course, organized in collaboration with the ILO's Youth Employment Programme, aims to **ensure that future interventions** targeting young NEETs are effective and appropriate. Join this course to start innovating for change—because there is no one-size-fits-all solution for youth NEET and their labour market inclusion.



PLACE

TURIN, ITALY



DATES

16 – 20 SEPTEMBER 2019



COLLABORATIVE LEARNING
ONLINE RESOURCES



LANGUAGES

ENGLISH



APPLICATION DEADLINE

28 JULY 2019

WHAT

WHAT TOPICS DOES THIS COURSE COVER?

This course presents global and regional overviews of trends, challenges, and opportunities regarding young NEETs.

- **Characteristics** of young NEETs and circumstances underlying their status
- **Policy approaches** and responses to the challenge using available instruments
- **Operational efforts and best practice**, interventions in the field

WHAT WILL I LEARN?

This course provides the knowledge and tools professionals need to approach youth NEET-related issues in a holistic way.

- All about the **sub-groups of young NEETs**, as well as potential risk factors
- How to utilize **policy instruments**, including early intervention, activation, labour market integration, and outreach
- How **different countries and regions** design policies according to specific needs

WHAT WILL I BE ABLE TO DO?

Participants prepare to analyze country-specific situations and design better policies to reduce the NEET rate.

- Understand the **determinants and characteristics** of young NEETs
- Design **policy responses to reduce the NEET rate**
- Monitor and evaluate **existing and new** policy interventions

WHY

WHY SHOULD I JOIN?

The Turin Centre is known for its innovative learning and training methods.

- Learning sessions cover state-of-the-art content on **analytical, policy, and operational** areas of the issue.
- Participants from diverse **cultural and professional backgrounds** share experiences and insights.

WHO

WHO JOINS THIS COURSE?

- Government officials
- Representatives of workers' and employers' organizations
- Leaders of youth organizations
- Development partners

HOW TO APPLY

Go to bit.ly/2Ye3Gka to find the course and apply before **28 July 2019**.

PRICE

Tuition: €1,615

Subsistence: €635

Total: €2,250

LEARN DIFFERENTLY

The Centre's training methods include participatory discussions and group exercises

COLLABORATIVE ENVIRONMENT

Meet and collaborate with an international cohort

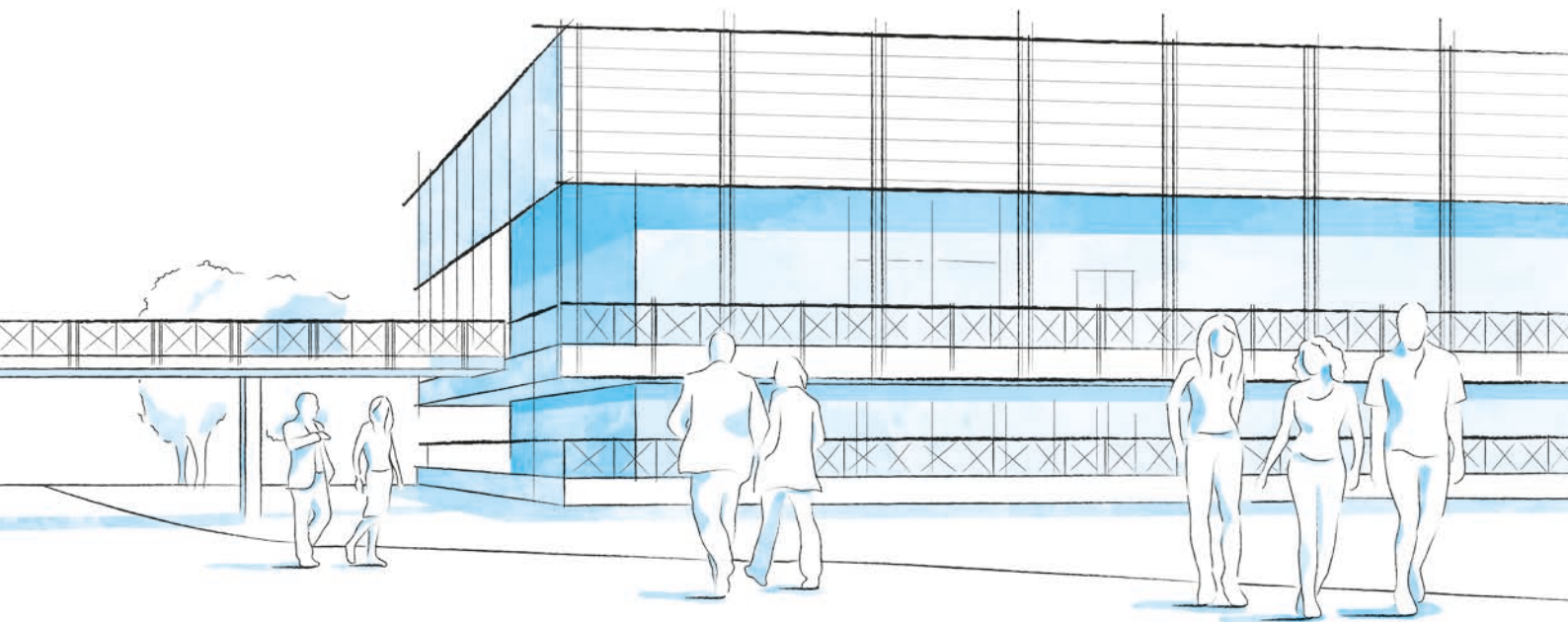
PROVEN PROCEDURES

This course is based on ILO-recognized strategies and standards



SCAN THE QR CODE
OR VISIT

bit.ly/2VcYKdt



CAMPUS LIFE

A THRIVING UNITED NATIONS CAMPUS AND COMMUNITY OF PROFESSIONAL PEOPLE FROM AROUND THE WORLD

- **Three organizations** from the United Nations system on campus
- **More than 300 training courses** and activities in a stimulating international environment
- **Thousands of participants** from all over the world

ENVIRONMENT AND SURROUNDINGS

Grab a campus bicycle and explore the Turin Centre.

Located in a leafy park on the banks of the Po River, it's a great place for study and collaboration. Experience innovative learning and training methods in modern classrooms equipped with simultaneous translation services.

HOUSING, DINING, AND MORE

Comprising more than 280 private dormitories, the **Turin Campus provides a broad range of services for course participants and partners** including a free-flow restaurant, bank, travel agency, laundromat, post office, gym, medical services and a reception desk open 24/7.

COMMUNITY ENGAGEMENT AND DIVERSITY

Participants can enjoy social events organized by the Turin Centre as well as by their course facilitators.

Whether on or off campus, people from different cultural backgrounds have the opportunity to listen to live music together, cook and share traditional foods, or team up to play games and network.

INFO

FOR FURTHER INFORMATION PLEASE CONTACT

International Training Centre of the ILO

Employment Policy and Analysis Programme (EPAP)
Viale Maestri del Lavoro, 10
10127 Turin – Italy

youth@itcilo.org
www.itcilo.org

COURSE CODE: A9012093

Made of paper awarded the European Union Eco-label, reg.nr FR/011/002, supplied by International Paper. 